

PASSAMEZE & GAILLARDE.

CCLXXXIII. à 5.

F. C.

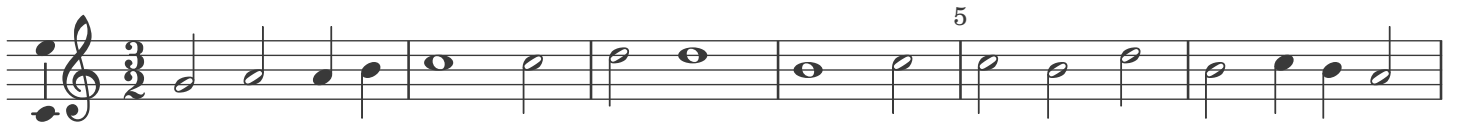
1. Passameze.



CCLXXXIV. à 5.

F. C.

Gaillarde.



CCLXXXV. à 5.

F. C.

Gaillarde.

Musical score for CCLXXXV. à 5. Gaillarde. The score consists of four staves of music in 3/4 time. The first staff starts with a treble clef and a 3/4 time signature. The music is written in a single line. Measure numbers 5, 10, 15, and 20 are indicated above the staves. The piece ends with a double bar line and repeat signs.

CCLXXXVI. à 6.

F. C.

2. Passameze.

Musical score for CCLXXXVI. à 6. 2. Passameze. The score consists of six staves of music in 6/8 time. The first staff starts with a treble clef and a 6/8 time signature. The music is written in a single line. Measure numbers 5 and 10 are indicated above the staves. The piece includes first and second endings, marked with '1.' and '2.' above the staves. The piece ends with a double bar line and repeat signs.

CCLXXXVII. à 5.

MPC.

Gaillarde.

5

10

15

20

25

30

CCLXXXVIII. à 6.

F.C.

3. Passameze pour les cornetz.

5

10

15

20

25