

## PASSAMEZE &amp; GAILLARDE.

CCLXXXIII. à 5.

F. C.

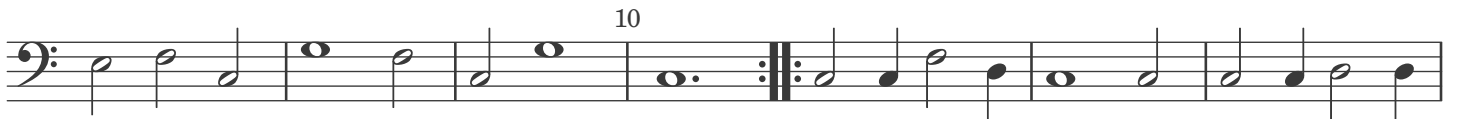
## 1. Passameze.



CCLXXXIV. à 5.

F. C.

## Gaillarde.



## CCLXXXV. à 5.

F. C.

Gaillarde.

Musical score for CCLXXXV. à 5. Gaillarde. in bass clef, 3/2 time signature. The score consists of four staves of music. The first staff starts with a treble clef and a 3/2 time signature. The music is in a single system. The second staff has a measure rest labeled '10'. The third staff has measure rests labeled '15' and '20'. The fourth staff has a measure rest labeled '25'. The piece ends with a double bar line.

## CCLXXXVI. à 6.

F. C.

2. Passameze.

Musical score for CCLXXXVI. à 6. 2. Passameze. in bass clef, common time signature. The score consists of four staves of music. The first staff starts with a treble clef and a common time signature. The music is in a single system. The second staff has first and second endings labeled '1.' and '2.' and a measure rest labeled '10'. The third staff has a measure rest labeled '15'. The fourth staff has first and second endings labeled '1.' and '2.' and a measure rest labeled '15'. The piece ends with a double bar line.

## CCLXXXVII. à 5.

MPC.

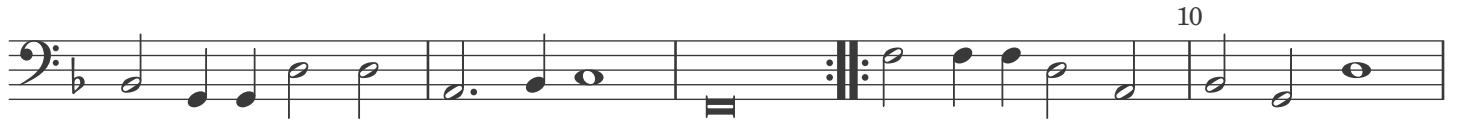
Gaillarde.

Musical score for CCLXXXVII. à 5. Gaillarde. in bass clef, 3/2 time signature. The score consists of four staves of music. The first staff starts with a treble clef and a 3/2 time signature. The music is in a single system. The second staff has a measure rest labeled '10'. The third staff has measure rests labeled '15' and '20'. The fourth staff has measure rests labeled '25' and '30'. The piece ends with a double bar line.

## CCLXXXVIII. à 6.

F.C.

3. Passameze pour les cornetz.



## CCLXXXIX. à 5.

MPC.

Gaillarde de Monsieur Wüstrow.

