

## XVII. à 4. BRANSLE de la Royne.

M. P. C.

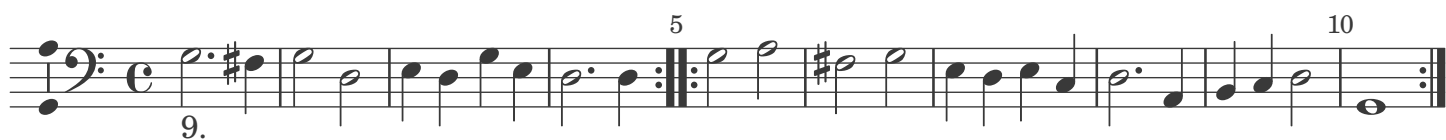
Dieses wird sonst eine Quinta höher gesetzt: also weil es dergestalt gar zu frembd und schwehr ist / hab ich es in die Quintam herunter transponiret: Doch kan der Music gelienter solches endern und setzen oder musiciren, wie er wil.

### 1. Bransle de la Royne.

The musical score for '1. Bransle de la Royne' is presented in six systems, each consisting of two staves. The first system begins with a treble clef and a common time signature (C), while the subsequent systems use a bass clef. The key signature is one sharp (F#). Measure numbers are indicated at the beginning of each system and at intervals of five measures throughout the piece. The score includes various musical notations such as notes, rests, and bar lines, with repeat signs at the end of the first and sixth systems.



hier ist das final. Etliche aber brauchen diese nachfolgende auch noch darzu



XVIII. à 5.  
**BRANSLE Lorraine.**

M. P. C.

1. Bransle Lorraine.



CCLXI. à 4.  
Ballet du filou.

MPC.

1.

1. 5 10 15 20 25 30 35 40 45 50 55 60 65 70 75 80 85 10.

1. 2. 3. 4. 5. 6. 7. 8. 9. 10.

90

First musical staff in bass clef with a key signature of two sharps (F# and C#). It contains a sequence of notes with a measure number 90 above the staff.

11. 95 100

11.

Second musical staff in bass clef with a key signature of two sharps. It contains a sequence of notes with measure numbers 11, 95, and 100. The number 11. is placed below the staff.

105 110

Third musical staff in bass clef with a key signature of two sharps. It contains a sequence of notes with measure numbers 105 and 110.

115

Fourth musical staff in bass clef with a key signature of two sharps. It contains a sequence of notes with a measure number 115.

12. *Suit.* 120

12.

Fifth musical staff in bass clef with a key signature of two sharps and a 2/2 time signature. It is labeled "12. *Suit.*" and contains a sequence of notes with a measure number 120.

125 130

Sixth musical staff in bass clef with a key signature of two sharps. It contains a sequence of notes with measure numbers 125 and 130.

13. 135 140

13.

Seventh musical staff in bass clef with a key signature of two sharps. It contains a sequence of notes with measure numbers 13, 135, and 140. The number 13. is placed below the staff.

14. 145 150

14.

Eighth musical staff in bass clef with a key signature of two sharps and a 3/2 time signature. It contains a sequence of notes with measure numbers 14, 145, and 150. The number 14. is placed below the staff.

155 160

Ninth musical staff in bass clef with a key signature of two sharps. It contains a sequence of notes with measure numbers 155 and 160.

15. 165

15.

Tenth musical staff in bass clef with a key signature of two sharps. It contains a sequence of notes with measure numbers 15, 165, and 170. The number 15. is placed below the staff.

170 175

Eleventh musical staff in bass clef with a key signature of two sharps. It contains a sequence of notes with measure numbers 170 and 175.

CCLXII. à 4.  
**Ballet des sorciers qu'il faut sonner  
 avant le Ballet du Roy.**

MPC.

CCLXIII. à 4.  
**Ballet de la Royne.**

MPC.

5.

45

50

55

60

65

6.

70

75

80

85

(90)

95

1.

2.

7.

100

105

8.

110

115

9.

120

10.

125 130

135

11.

140

Courante. 145

12.

150 155

Gaillarde. 160

13.

165

1. Entree du ballet. (170) 175

14.

180

185

15.

Gaillarde. 190

16.

Courante.

195

(200)

17.

205

210

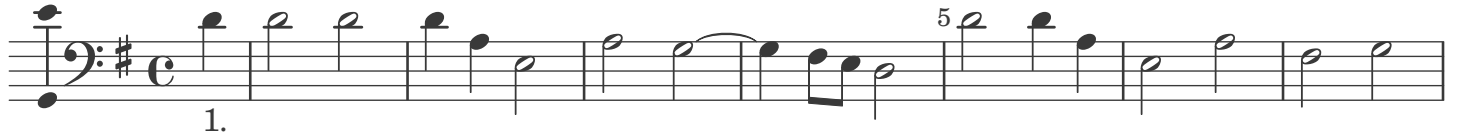
215



## CCLXXXII. à 4.

## Ballet de Monseigneur de Navarre.

MPC.



## 1. Sarabande.



## 2. Sarabande.



## Courante.

