

Violin 1

Sonata a Quattro, (No. 8)

(from Sacro-Profanus Concentus Musicus, (1662))

Johann Heinrich Schmelzer (c.1620-23 -1680)

The image displays a musical score for the Violin 1 part of the Sonata a Quattro (No. 8) by Johann Heinrich Schmelzer. The score is written in treble clef with a key signature of two sharps (D major) and a common time signature (C). The piece consists of 60 measures, with measure numbers 7, 12, 19, 24, 30, 35, 40, 45, 50, and 54 marked at the beginning of their respective staves. The notation includes various rhythmic values such as eighth, sixteenth, and thirty-second notes, as well as rests and accidentals. There are three distinct triplet markings: one at measure 15, one at measure 27, and one at measure 55. The score concludes with a final note in measure 60.

61



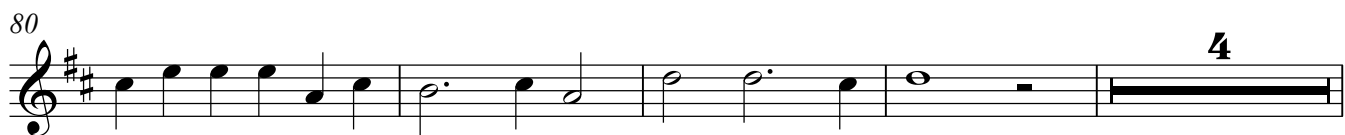
66



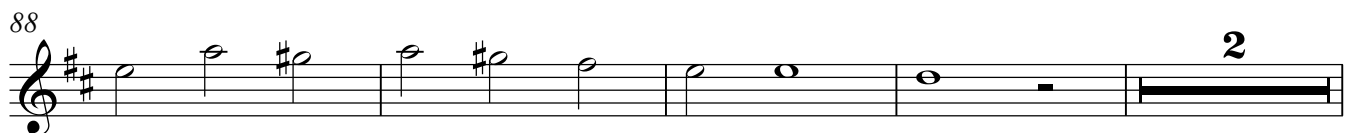
75



80



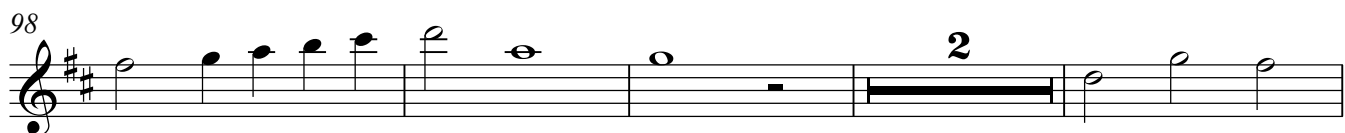
88



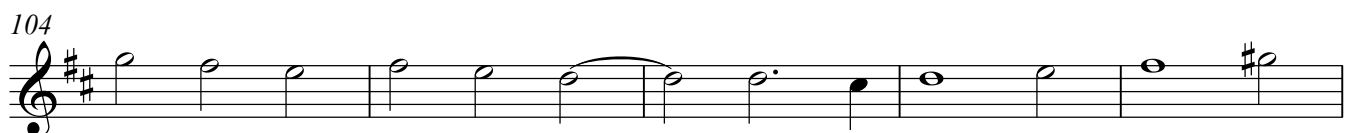
94



98



104



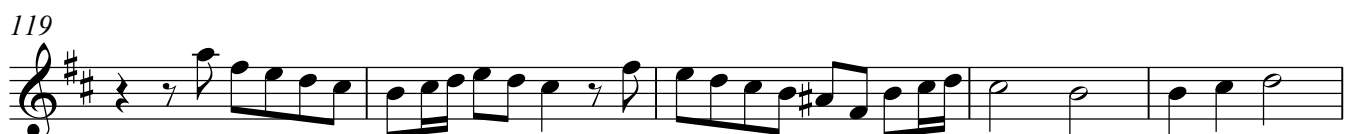
109



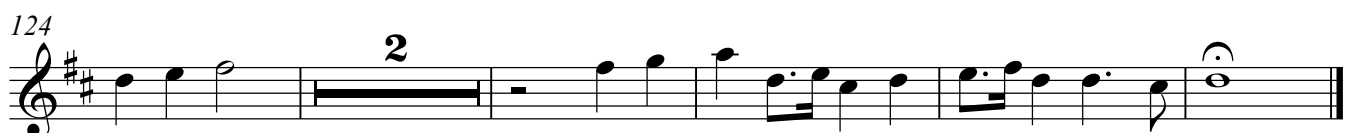
114



119



124



Violin 2

Sonata a Quattro, (No. 8)

(from Sacro-Profanus Concentus Musicus, (1662))

Johann Heinrich Schmelzer (c.1620-23 -1680)

6

11

16

21

27

32

40

47

52

57

2

3

62

69

75

81

87

92

97

102

109

115

121

126

Viola

Sonata a Quattro, (No. 8)

(from Sacro-Profanus Concentus Musicus, (1662))

Johann Heinrich Schmelzer (c.1620-23 -1680)



7



12



18



23



29



35



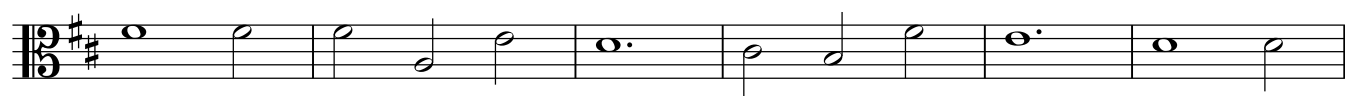
40



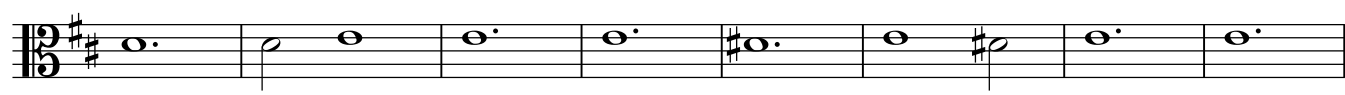
46



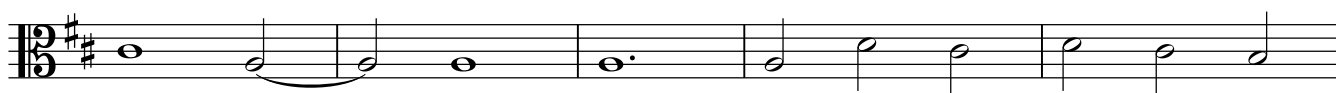
53



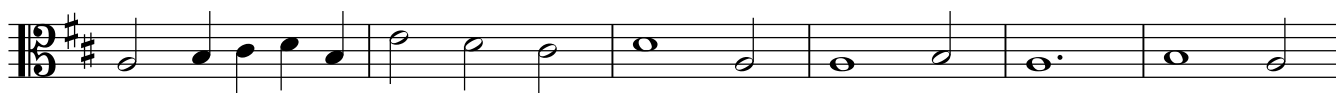
59



67



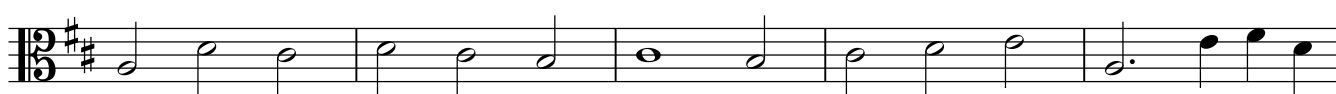
72



78



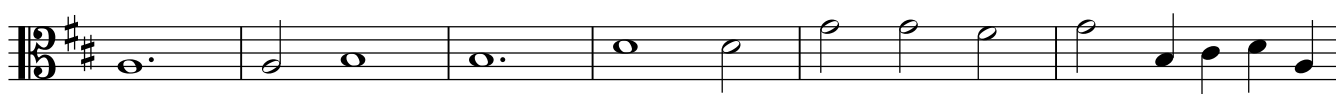
83



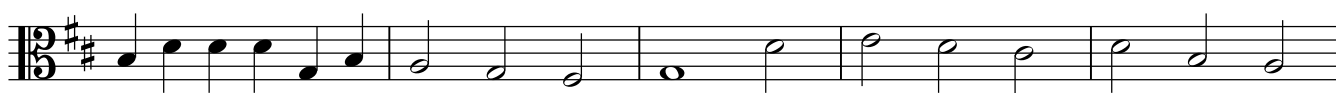
88



95



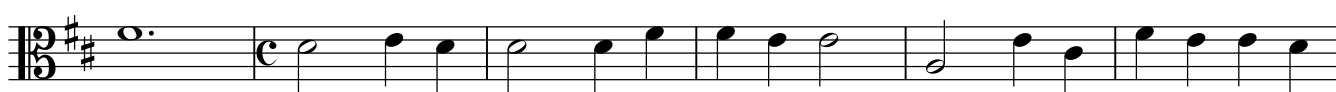
101



106



112



118



124



127



Violoncello

Sonata a Quattro, (No. 8)

(from Sacro-Profanus Concentus Musicus, (1662))

Johann Heinrich Schmelzer (c.1620-23 -1680)



6



12



17



25



31



36



42



48



53



58



